

☒ SELECT DESIRED FINISH:

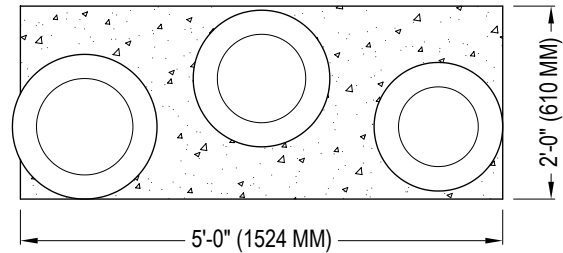
☐ BRUSHED

☐ BEAD BLASTED

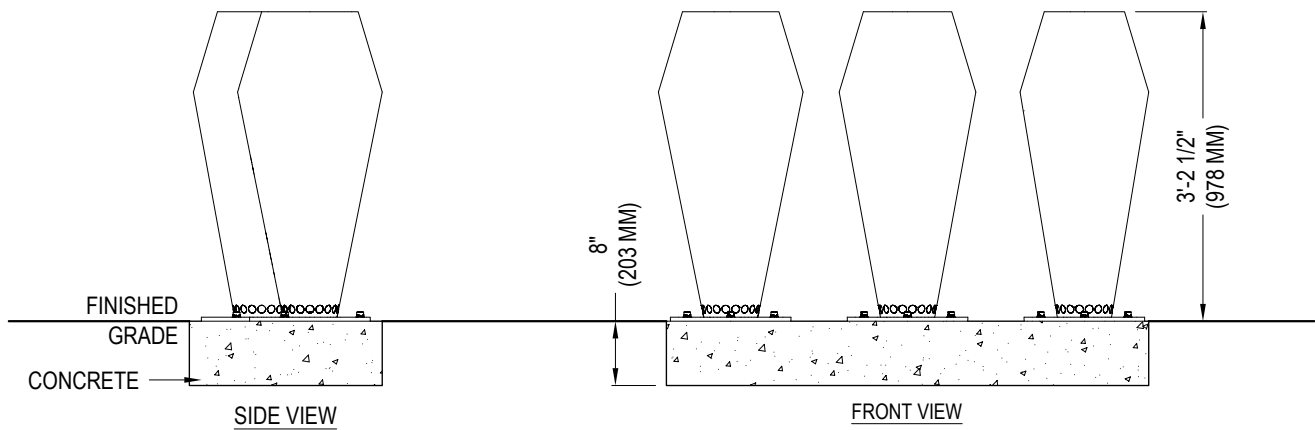
☒ SELECT DESIRED STEEL:

☐ 304 / 304L

☐ 316 / 316L



PLAN VIEW



SPECIFICATIONS

MATERIAL: 304/304L STAINLESS STEEL (MADE WITH 316L - (MARINE GRADE) STAINLESS STEEL WHEN INSTALLED IN A CHRONICALLY WET

INSTALLATION: SURFACE MOUNTED

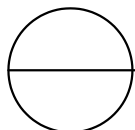
- BEAD BLASTED FINISH IS RECOMMENDED FOR HOT ENVIRONMENTS
- TOP 4" OF CONCRETE CAN BE DYED OR STAMPED FOR A MORE AESTHETIC APPEARANCE

MANUFACTURERS NOTES

1. IF AN INSTRUMENT IS VANDALIZED BY PAINT OR MARKERS, USE A HOUSEHOLD CLEANER DESIGNED FOR STAINLESS STEEL TO REMOVE THE MARKS. RUBBING ALCOHOL IS RECOMMENDED FOR SHARPIE, STICKERS, ETC.
2. PERIODICALLY CHECK THE UNDERSIDE OF INSTRUMENTS TO PREVENT DEBRIS AND/OR BUGS FROM ACCUMULATING INSIDE.
3. IF INSTRUMENTS ARE SCRATCHED, CONSULT SONIC ARCHITECTURE ON THE BEST WAY TO REFINISH.
4. HARDWARE IS THE RESPONSIBILITY OF THE CONTRACTOR. RECOMMENDED HARDWARE IS TYPICALLY, 18-8 STAINLESS STEEL RODS WITH HILTI HIT 150 ARCHITECTURAL GRADE EPOXY OR EQUIVALENT, SECURED WITH 18-8 STAINLESS STEEL WASHERS, LOCK WASHERS, HEX NUTS AND BLUE LOCTITE. ITEMS DRAWN WITH MINIMUM RECOMMENDED INSTALL DEPTHS.

NOTES:

1. INSTALLATION TO BE COMPLETED IN ACCORDANCE WITH MANUFACTURER'S SPECIFICATIONS.
2. DO NOT SCALE DRAWING.
3. THIS DRAWING IS INTENDED FOR USE BY ARCHITECTS, ENGINEERS, CONTRACTORS, CONSULTANTS AND DESIGN PROFESSIONALS FOR PLANNING PURPOSES ONLY. THIS DRAWING MAY NOT BE USED FOR CONSTRUCTION.
4. ALL INFORMATION CONTAINED HEREIN WAS CURRENT AT THE TIME OF DEVELOPMENT BUT MUST BE REVIEWED AND APPROVED BY THE PRODUCT MANUFACTURER TO BE CONSIDERED ACCURATE.
5. CONTRACTOR'S NOTE: FOR PRODUCT AND COMPANY INFORMATION VISIT www.CADdetails.com/info AND ENTER REFERENCE NUMBER 5589-005.



WORLD DRUMS

CONGAS (SONIC-CONG)